

HERCULES ROAD

2.2 M

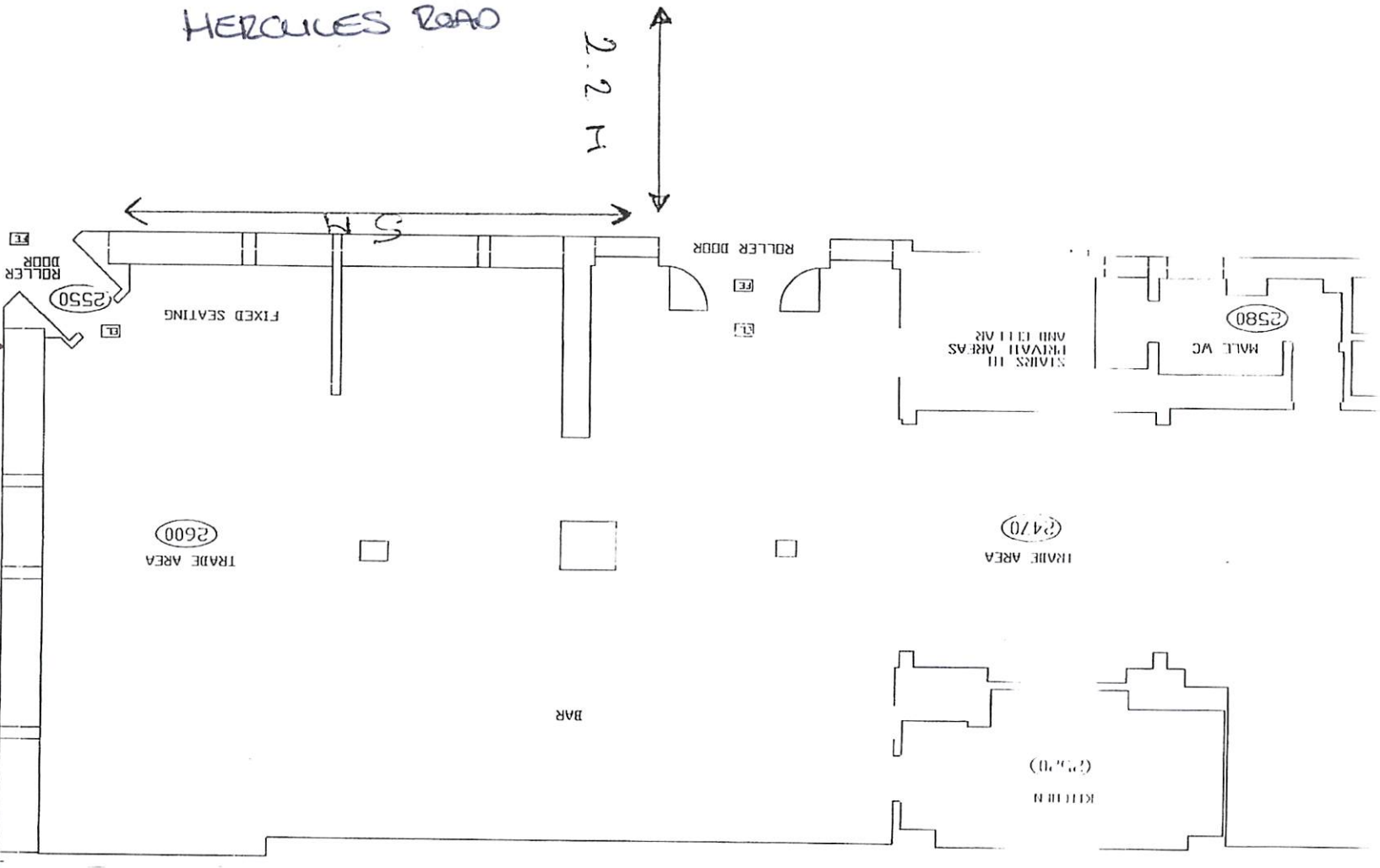
WALL TO KERB
TOTAL DEPTH 6.4 M

MAIN FOOTPATH
HOLDWAY ROAD

TOTAL LENGTH 9.5 M
(OCCUPY LENGTH)

OCCUPY DEPTH 2 M

REMAINING UNOCCUPIED
DEPTH 4.4 M



AREA
1/11